

Invoice to:
 Name:
 Street:
 Town: Postal code:
 E-Mail:
 Tel: Fax:

Deliver to:
 Name:
 Street:
 Town: Postal code:
 E-Mail:
 Tel: Fax:

Order date:
 Purchase order:
 Number required:

Marked for:
 Sunrise order no:

Jay® J3 Cushion Standard Features
 Unique Optiwell technology to maximise stability & pressure redistribution
 Fluid pad (standard factory filled or field variable) or Roho Air (single or dual valve) insert to optimise immersion & accommodate positioning needs
 Modifications and positioning accessories available
 Std or deep flat foam base. Microclimatic cover with foam comfort layer
 2 Year guarantee. 6 months on cover

E-mail: orders@sunmed.co.uk

Fax: 0845 605 66 89

Max. user weight:
150kg (cushion width 30 to 50cm)
227kg (cushion width: 56 to 60cm)

HOW TO ORDER

To order a J3 Cushion, a J3 SMART Part Number must be built. Follow the steps below to build your own unique Smart Part #.

Start JAY J3 Cushion	STEP 1 Contour	STEP 2 Size	STEP 3 PLA (Well Size)	STEP 4 Insert	STEP 5 Cover
J3C	S	4040	B	FF	M
J3 Cushion	Standard Contour	40 x 40cm	B wells size	Factory Filled Fluid Insert	Micro climatic cover

STEP 1 - CUSHION HEIGHT

CUSHION HEIGHT	Select	Part #	Base Price	30-48cm	50-60cm	Selected Components
Standard (9.1cm unloaded state with cover)	<input type="checkbox"/>	S	£517	£591		
Deep (10.5cm unloaded state with cover)	<input type="checkbox"/>	D	£553	£628		

S or D

Note: Deep height not available in 30x30, 30x35 or 35x30cm sizes
 Deep height designed for maximum immersion/envelopment for a higher risk user with decreased tissue mass

STEP 2 - CUSHION SIZE

CUSHION WIDTH AND DEPTH	Part #	Selected Components
Standard Cushion (width: 30 - 50cm)	Select	
Bariatric Cushion (width: 56 - 60cm)	in matrix	

Width x Depth (cm)

		Width										
		30	35	38	40	42	44	46	48	50	56	60
Depth	30	△	△									
	35	△	○									
	38		○	○	○	○	○					
	40		○	○	○	○	○					
	42			○	○	○	○	○				
	44			○	○	○	○	○	○			
	46		○		○	○	○	○	○	○	○	○
	48				○	○	○	○	○	○	○	○
	50						○	○	○	○	○	○
	56										○	○
60										○	○	
Standard PLA		A			B (can be reduced to PLA A)				C (can be reduced to PLA A & B)			

- △ Only available in standard height
- Available in Standard and Deep height
- ▨ Available on an extended lead-time, subject to clinical evaluation
- Not available



Note: measure depth from front of seat notch to front top side of cushion.
 All measurements are including the cover

STEP 3 - PELVIC LOADING AREA SIZE (WELL SIZE)

Experience has indicated that the PLA (well) size that is standard on the cushion is appropriate for the majority of users. There is an option to reduce the PLA size via PLA reducer rings if this is clinically appropriate to optimise immersion, lateral stability and prevent bottoming out.

PELVIC LOADING AREA (PLA) SIZE

	Select	Part #
A - Small (Standard with 30 - 38cm width*)	<input type="checkbox"/>	A
B - Medium (Standard with 40 - 48cm width*)	<input type="checkbox"/>	B
C - Large (Standard with 50 - 60cm width*)	<input type="checkbox"/>	C

Selected Components

A, B or C

There is an option to reduce the PLA size via PLA reducer rings if this is clinically appropriate to optimize immersion, lateral stability and prevent bottoming out

*Unless another size is requested B and C PLA sizes are not available on 30 - 38cm wide cushions. / C PLA size are not available on 30 - 48cm wide cushions

STEP 4 - PELVIC LOADING AREA SIZE (WELL SIZE)

PELVIC LOADING AREA (PLA) INSERT

	Select	Part #	Price
FLUID - Factory Filled Fluid Pad Option	<input type="checkbox"/>	FF	£0
FLUID - Field Variable Fluid Pad Option*	<input type="checkbox"/>	FV	£23
AIR Insert Option - Single Valve**	<input type="checkbox"/>	AS	£35
AIR Insert Pad Option - Dual Valve**	<input type="checkbox"/>	AD	£35

Selected Components

FF, FV, AS, AD



Factory Fluid - FF



Field Variable - FV



Air single valve - AS



Air dual valve - AD

FV	Fluid Supplement Pads Size
FV Size A	2x Medium - J3CFSPM
FV Size B	2x Large - J3CFSPPL
FV Size C	2x X-Large - J3CFSPXL

*Field Variable Insert comes standard with two 3D fluid supplement pads for adjustment or assessment purposes and can accommodate two additional pads, available in: Small, Medium; Large, X-Large **Air Bladder Options ship with instructions, air pump, patch kit and nozzle fittings

STEP 5 - COVER OPTION

	Select	Part #
Incontinent Cover	<input type="checkbox"/>	I
Microclimatic Cover	<input type="checkbox"/>	M

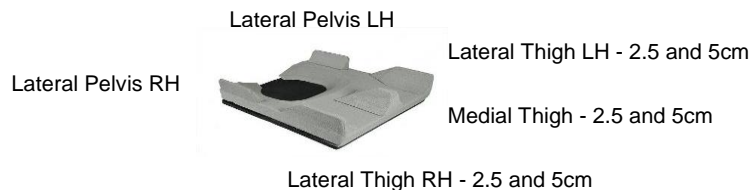
Components

I OR M

POSITIONING OPTIONS

	Short (Width 30 - 38cm)	Medium (Width 40 - 48cm)	Long (width 50 - 60cm)	Price
Lateral Thigh 2.5cm (1") (Left & Right)	<input type="checkbox"/> J3CALS1	<input type="checkbox"/> J3CALM1	<input type="checkbox"/> J3CALL1	£46
Lateral Thigh 5cm (2") (Left & Right)	<input type="checkbox"/> J3CALS2	<input type="checkbox"/> J3CALM2	<input type="checkbox"/> J3CALL2	£52
Medial Thigh 2.5cm (1") (each)	<input type="checkbox"/> J3CAMS1	<input type="checkbox"/> J3CMM1	<input type="checkbox"/> J3CAML1	£44
Medial Thigh 5cm (2") (each)	<input type="checkbox"/> J3CAMS2	<input type="checkbox"/> J3CMM2	<input type="checkbox"/> J3CAML2	£46
Lateral Pelvic 5cm (2") (Left & Right)	<input type="checkbox"/> J3CAPS2	<input type="checkbox"/> J3CAPM2	<input type="checkbox"/> J3CAPL2	£57

	PLA A	PLA B	PLA C	Price
Obliquity Pad Left - Standard base	<input type="checkbox"/> J3CSAOL	<input type="checkbox"/> J3CSBOL	<input type="checkbox"/> J3CSCOL	£33
Obliquity Pad Right - Standard base	<input type="checkbox"/> J3CSAOR	<input type="checkbox"/> J3CSBOR	<input type="checkbox"/> J3CSCOR	£33
Obliquity Pad Left - Deep base	<input type="checkbox"/> J3CDAOL	<input type="checkbox"/> J3CDBOL	<input type="checkbox"/> J3CDCOL	£33
Obliquity Pad Right - Deep base	<input type="checkbox"/> J3CDAOR	<input type="checkbox"/> J3CDBOR	<input type="checkbox"/> J3CDCOR	£33



J3 PART NUMBER

J3C					
	STEP 1	STEP 2	STEP 3	STEP 4	STEP 5

JAY J3 Cushion Price	£
Option Price	£
VAT	£
Total Price	£

SPARE PARTS

PLA Reducer - Standard base		£
<input type="checkbox"/>	J3CPLARSCB PLA reducer Std C -> B	20.00
<input type="checkbox"/>	J3CPLARSCA PLA reducer Std C -> A	20.00
<input type="checkbox"/>	J3CPLARSBA PLA reducer Std B -> A	20.00

Fluid Supplement Pads (each)		£
<input type="checkbox"/>	J3CFSPS Small	29.00
<input type="checkbox"/>	J3CFSPM Medium	31.00
<input type="checkbox"/>	J3CFSP L Large	34.00
<input type="checkbox"/>	J3CFSPXL X-Large	37.00

PLA Reducer - Deep base		£
<input type="checkbox"/>	J3CPLARDCB PLA reducer Deep C -> B	20.00
<input type="checkbox"/>	J3CPLARDCA PLA reducer Deep C -> A	20.00
<input type="checkbox"/>	J3CPLARDBA PLA reducer Deep B -> A	20.00

Spare Cover		£
<input type="checkbox"/>	J3CCwddI Cover Standard & Deep Incontinent	47.00
<input type="checkbox"/>	J3CCwddM Cover Standard & Deep Microclimatic	47.00

ww: Width dd: Depth

Evaluation (Fluid & Air) & Positioning Kits		£
<input type="checkbox"/>	J3CEKSAEU Standard PLA evaluation kit	576.00
<input type="checkbox"/>	J3CEKDAEU Deep PLA evaluation kit	576.00
<input type="checkbox"/>	J3CPEKEU Positioning kit	576.00

Solid Seat		£
<input type="checkbox"/>	J3Iwwdd Solid Seat insert (wood plate)	37.00

ww: Width dd: Depth

Fluid & Air inserts

PLA A		£	PLA B		£	PLA C		£
<input type="checkbox"/>	J3CSAFFEU FF Fluid Std	293.00	<input type="checkbox"/>	J3CSBFFEU FF Fluid Std	293.00	<input type="checkbox"/>	J3CSCFFEU FF Fluid Std	293.00
<input type="checkbox"/>	J3CSAFVEU FV Fluid Std	293.00	<input type="checkbox"/>	J3CSBFVEU FV Fluid Std	293.00	<input type="checkbox"/>	J3CSCFVEU FV Fluid Std	293.00
<input type="checkbox"/>	J3CDAFFEU FF Fluid Deep	333.00	<input type="checkbox"/>	J3CDBFFEU FF Fluid Deep	333.00	<input type="checkbox"/>	J3CDCFFEU FF Fluid Deep	333.00
<input type="checkbox"/>	J3CDAFVEU FV Fluid Deep	333.00	<input type="checkbox"/>	J3CDBFVEU FV Fluid Deep	333.00	<input type="checkbox"/>	J3CDCFVEU FV Fluid Deep	333.00
<input type="checkbox"/>	J3CSAAEU AS Air Std	332.00	<input type="checkbox"/>	J3CSBASEU AS Air Std	332.00	<input type="checkbox"/>	J3CSCASEU AS Air Std	332.00
<input type="checkbox"/>	J3CSAADEU AD Air Std	332.00	<input type="checkbox"/>	J3CSBADEU AD Air Std	332.00	<input type="checkbox"/>	J3CSCADEU AD Air Std	332.00
<input type="checkbox"/>	J3CDAASEU AS Air Deep	367.00	<input type="checkbox"/>	J3CDBASEU AS Air Deep	367.00	<input type="checkbox"/>	J3CDCASEU AS Air Deep	367.00
<input type="checkbox"/>	J3CDAADEU AD Air Deep	367.00	<input type="checkbox"/>	J3CDBADEU AD Air Deep	367.00	<input type="checkbox"/>	J3CDCADEU AD Air Deep	367.00

J3 POSITIONING KIT - J3CPEKEU	Short (width 30 - 38cm)	Medium (width 40 - 48cm)	Long (width 50 - 60cm)
Lateral Thigh Left 2.5cm (1") (Left & Right)		1x J3CALM1	1x J3CALL1
Lateral Thigh Left 5cm (2") (Left & Right)	1x J3CALS2	1x J3CALM2	1x J3CALL2
Medial Thigh 2.5cm (1") (each)		1x J3CAMP1	1x J3CAML1
Medial Thigh 5cm (2") (each)	1x J3CAMS2	1x J3CAMP2	1x J3CAML2
Lateral Pelvic 5cm (2") (Left & Right)	1x J3CAPS2	1x J3CAPM2	
		PLA B	PLA C
Obliquity Pad Left - Standard base (each)		1x J3CSBOL	1x J3CSCOL
Obliquity Pad Right - Standard base (each)		1x J3CSBOR	1x J3CSCOR
Obliquity Pad Left - Deep base (each)		1x J3CDBOL	1x J3CDCOL
Obliquity Pad Right - Deep base (each)		1x J3CDBOR	1x J3CDCOR
Replacement tape roll	1x J3CPRT		

J3C FLUID STANDARD EVALUATION KIT - J3CEKSAEU	Qty Part Nr.	Qty Part Nr.	Qty Part Nr.
Field Variable Fluid Pad Option (PLA B & PLA C)		1x J3CSBFVEU	1x J3CSCFVEU
AIR Fluid Pad Option - Single Valve (PLA B & PLA C)		1x J3CSBASEU	1x J3CSCASEU
AIR Fluid Pad Option - Dual Valve (PLA B & PLA C)		1x J3CSBADEU	1x J3CSCADEU
PLA reducer Std C -> B	1x J3CPLARSCB		
Fluid Supplement Pads - Small & Medium	2x J3CFSPS	2x J3CFSPM	
Fluid Supplement Pads - Large & X-Large	2x J3CFSP L	2x J3CFSPXL	
Roho Repair Kit	1x J3CRK		
Roho Air Pump	1x J3CAP		

J3C FLUID DEEP EVALUATION KIT - J3CEKDAEU	Qty Part Nr.	Qty Part Nr.	Qty Part Nr.
Field Variable Fluid Pad Option (PLA B & PLA C)		1x J3CDBFVEU	1x J3CDCFVEU
AIR Fluid Pad Option - Single Valve (PLA B & PLA C)		1x J3CDBASEU	1x J3CDCASEU
AIR Fluid Pad Option - Dual Valve (PLA B & PLA C)		1x J3CDBADEU	1x J3CDCADEU
PLA reducer Std C -> B	1x J3CPLARDCB		
Fluid Supplement Pads - Small & Medium	2x J3CFSPS	2x J3CFSPM	
Fluid Supplement Pads - Large & X-Large	2x J3CFSP L	2x J3CFSPXL	
Roho Repair Kit	1x J3CRK		
Roho Air Pump	1x J3CAP		

MODIFICATIONS - The following modifications can be ordered through Sunrise Medical customer service.

Translate a FV (Field Variable - blue) bladder with additional Fluid supplement pads into a FF (Factory Filled - grey) bladder

Translating an FV bladder with additional Fluid supplement pads into a FF bladder can be achieved by ordering a modified cushion. There is the possibility to add up to 2 Fluid supplement pads on each side of the FV bladder. When the right filling has been defined, complete the item number of the cushion with the following information:- (in the final item number always use **FF**, as this is what you want to achieve **LxyRxy** (e.g. J3CS4040BFFMLxyRxy)

L: for left side

x: the letter of the first fluid supplement pad that you want to add (S, M, L or X)

y: the letter of the second fluid supplement pad that you want to add (S, M, L or X)

(if no fluid supplement pads are required, please add u instead of x & y)

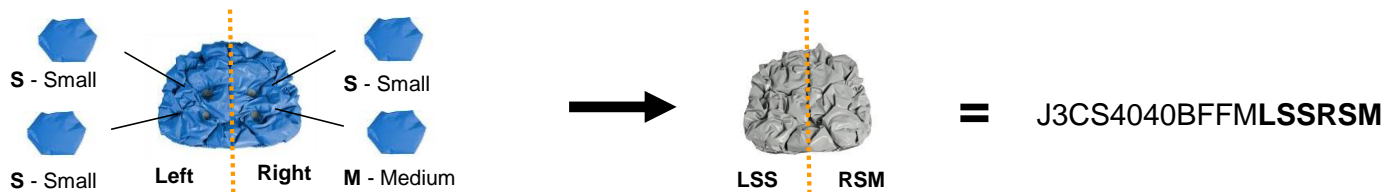
R: for right side

x: the letter of the first fluid supplement pad that you want to add (S, M, L or X)

y: the letter of the second fluid supplement pad that you want to add (S, M, L or X)

(if no fluid supplement pads are required, please add u instead of x & y)

Example: an FV with 2 S fluid supplement pads on the left and 1 S & 1 M on the right would be ordered as follows:-



Ordering a non-standard cushion size

Please refer to the first page of the order form where all sizes of standard and modified cushions are given.

When ordering please write the item number with the size required and add in the comment box "Modify size to (width) x (depth) cm"

Example: JAY J3 cushion is required in the size 38x56 (width x depth)

J3CS3856AFFM

Comment box: "Modify to size 38x56 cm (width x depth)"

Ordering a larger PLA size

Please refer to the first page of the order form where the width of the cushions and the standard PLA sizes are indicated.

If a larger PLA size is required, please verify the possibilities below and adapt the item number with the new PLA size.

And add in the comment box: "Modify PLA to (B/C)"

PLA C: can be ordered as a modification down to seat width 40cm (40 - 60cm)

PLA B: can be ordered as a modification down to seat width 35cm (35 - 48cm)

Example: JAY J3 cushion is required in the size 40x40 cm with a PLA C (standard PLA would be size B)

J3CS4040CFFM

Comment box: "Modify to PLA C"

Additional modifications to the cushion base

If one of the following modifications is needed, please add the comment in bold to the comment box and add the part number

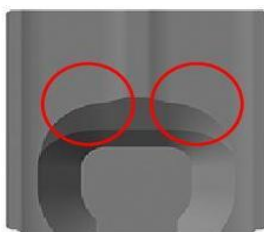
FTR - Femoral Relief Additional cut-away at the front of the PLA to decrease the slope angle from the PLA to the femoral support areas

SR - Scrotal Relief Front and centre of PLA is scooped out to accommodate organ tissue

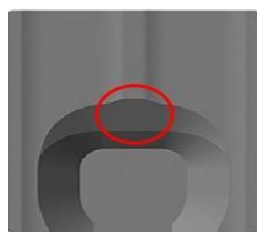
TR - Trochanteric Relief Base material is removed to create less pressure at or near the trochanters

NR - Notch for Rails Notch foam base to lower cushion between the seat rails

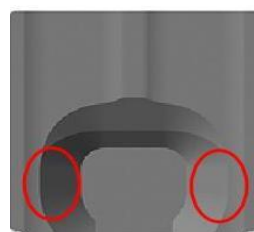
LTC - Leg Trough Cut For improved positioning, use this modification to increase the depth by approx. 2.5cm of the femoral trough to support the femurs



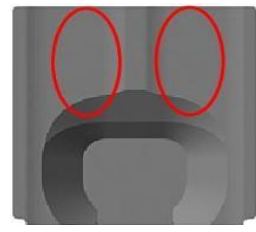
FTR - Femoral Relief



SR - Scrotal Relief



TR - Trochanteric Relief



LTC - Leg Trough Cut